

● CCE MODEL ●

SYLLABUS

1. Cell, its Structure and Functions
2. Plant Tissues
3. Animal Tissues

BIOLOGY

Class - 9

Time : 45 Min.

Marks : 20

	Project Work	Lab Activity	Children's Writing	Slip Test	Total
Allotted Marks	10	10	10	20	50
Scored Marks					

I. Answer the following questions.

$4 \times 1 = 4 M$

1. Write the cell organelles which are exclusively found in plants.
2. What did you observe in the onion peel layer under the microscope?
3. A lab technician added a few drops of "Antigen-D" to a blood sample. What is the aim of him by doing so?
4. What tissue form the bulk of the plant body? Write their types.

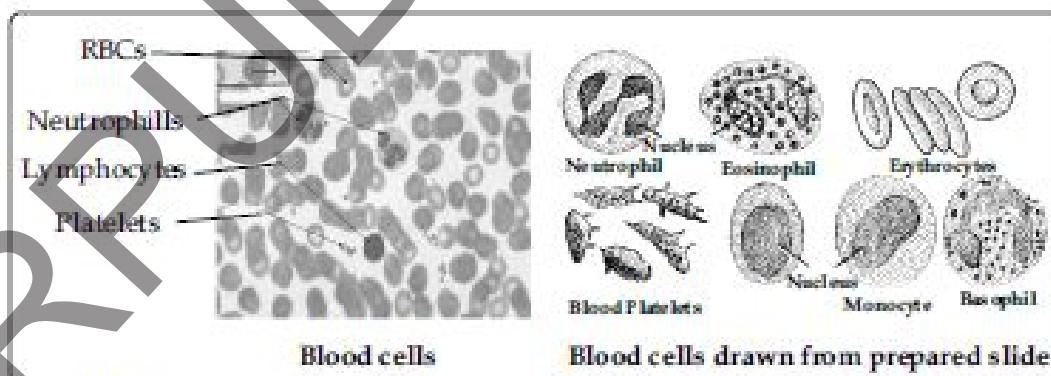
II. Answer the following questions.

$2 \times 2 = 4 M$

5. Give reasons

- a) Xylem is a conductive tissue
- b) Epidermis provides protection to plants

6. Compare both diagrams and answer the following questions.



- a) What did you observe?
- b) Are all cells in your blood sample same?

III. Answer the following questions.

$2 \times 4 = 8 M$

7. Sketch the transverse section of stem that you dissected and observed under microscope.
8. Draw a neatly labelled diagram of a neuron and write the uses of axons and dendrites.